

# Fabricating a provisional restoration over a healing cap using a 1.25-mm L-shaped Allen key

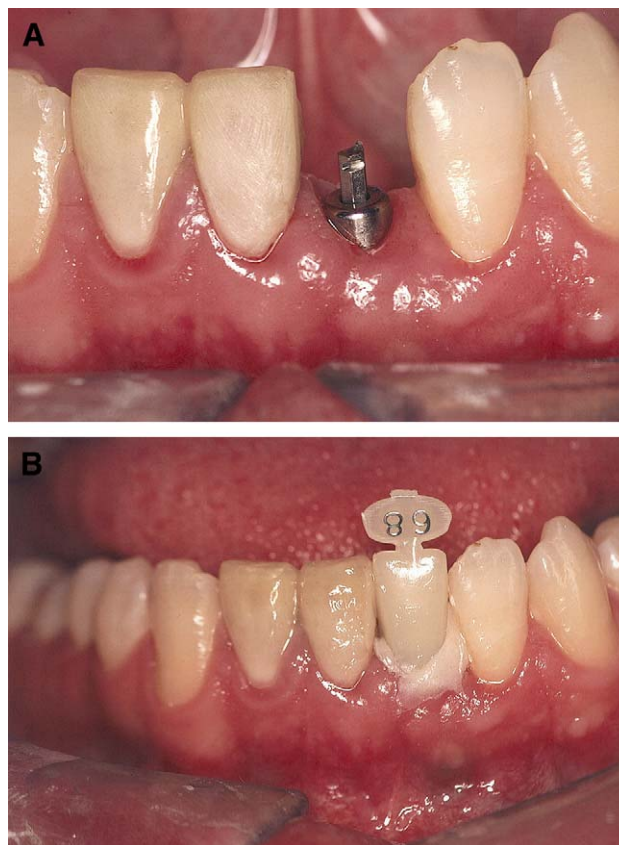
Ilan Gilboa, DMD,<sup>a</sup> and Harold S. Cardash, BDS, LDS, RCS Eng<sup>b</sup>

The Maurice and Gabriela Goldshleger School of Dental Medicine, University of Tel Aviv, Tel Aviv, Israel

After placing a transmucosal healing cap at second-stage surgery, a provisional restoration is desirable for esthetics, phonetics for development of a soft-tissue emergence profile around the implant, and to monitor the patient's oral hygiene.<sup>1-3</sup> Proussaefs<sup>4</sup> described a procedure for fabricating a provisional prosthesis using a vacuum-formed template of a diagnostic waxing on prepared healing caps. A provisional crown constructed directly on the healing cap with the aid of an L-shaped type Allen key (Tooled-up, Enfield, Middlesex, UK) is an easy and economical method of fabricating an implant-supported provisional crown in a single appointment. This article describes the fabrication of a provisional crown over a healing cap using a modified domestic 1.25-mm L-shaped type Allen key for additional retention.

## PROCEDURE

1. Remove 4 to 6 mm from the 1.25-mm L-shaped Allen key (Tooled-up, Enfield, Middlesex) using a separating disc (Dentorium Products Co, New York, NY) mounted on a low-speed straight handpiece.
2. Insert the cut portion of the key into the screw socket of the healing cap, leaving approximately 3 mm protruding from the screw socket (Fig. 1, A).
3. Contour a preformed polycarbonate crown (Ion; 3M ESPE, St Paul, Minn) to harmonize with the adjacent teeth, trim the crown to fit the titanium healing cap (Replace; Nobel Biocare, Goteborg, Sweden), fill the crown with autopolymerizing acrylic resin (Duralay; Reliance Dental Mfg & Co, Worth, Ill), and place over the healing cap (Fig. 1, B).
4. After polymerization of the acrylic resin, remove the restoration and fit a second identical healing cap on to the Allen key embedded in the crown, trim the excess acrylic resin, and create the desired emergence profile (Fig. 2, A).
5. Adjust the occlusion, polish the crown, remove the second healing cap, and fit the provisional crown (Fig. 2, B). Evaluate retention to determine if it is adequate without the use of provisional cement.



**Fig. 1.** A, Shortened Allen key inserted into socket of healing cap. B, Crown filled with autopolymerizing acrylic resin and fitted over healing cap.

## REFERENCES

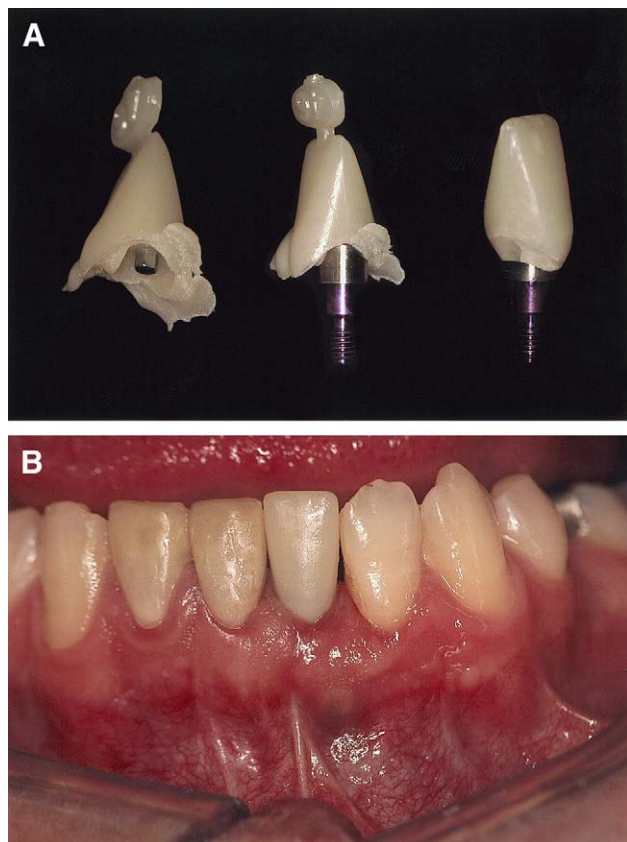
1. Moscovitch MS, Saba S. The use of a provisional restoration in implant dentistry: a clinical report. *Int J Oral Maxillofac Implants* 1996;11:395-9.
2. Sze AJ. Duplication of anterior provisional fixed partial dentures for the final restoration. *J Prosthet Dent* 1992;68:220-3.
3. Breeding LC, Dixon DL. Transfer of gingival contours to a master cast. *J Prosthet Dent* 1996;75:341-3.
4. Proussaefs P. The use of healing abutments for the fabrication of cement-retained implant-supported provisional prostheses. *J Prosthet Dent* 2002;87:333-5.

Reprint requests to:

DR HAROLD CARDASH  
DEPARTMENT OF ORAL REHABILITATION  
THE MAURICE AND GABRIELA SCHOOL OF DENTAL MEDICINE  
TEL AVIV UNIVERSITY  
RAMAT AVIV, TEL AVIV  
ISRAEL  
FAX: 972-3-6409250  
E-MAIL: [cardash@inter.net.il](mailto:cardash@inter.net.il)

<sup>a</sup>Instructor, Department of Oral Rehabilitation.

<sup>b</sup>Clinical Associate Professor, Department of Oral Rehabilitation.  
*J Prosthet Dent* 2006;95:401-2.



**Fig. 2.** **A**, Crown is removed (*left*); second healing cap is fitted to provisional crown (*middle*); excess acrylic resin is removed (*right*). **B**, Polished provisional crown.

0022-3913/\$32.00

Copyright © 2006 by The Editorial Council of *The Journal of Prosthetic Dentistry*.

doi:10.1016/j.prosdent.2006.03.014

#### Receive Tables of Contents by E-mail

To receive tables of contents by e-mail, sign up through our Web site at <http://www.journals.elsevierhealth.com/periodicals/ympr>.

##### Instructions

Log on and click "Register" in the upper right-hand corner. After completing the registration process, click on "My Alerts," then "Add Table of Contents Alert." Select the category "Mosby" or type *The Journal of Prosthetic Dentistry* in the search field and click on the Journal title. The title will then appear in your "Table of Contents Alerts" list.

Alternatively, if you are logged in and have already completed the Registration process, you may add tables of contents alerts by accessing an issue of the Journal and clicking on the "Add TOC Alert" link.

You will receive an e-mail message confirming that you have been added to the mailing list.

Note that tables of contents e-mails will be sent when a new issue is posted to the Web site.